

Hembury Court, Ingleby Barwick



£194,500





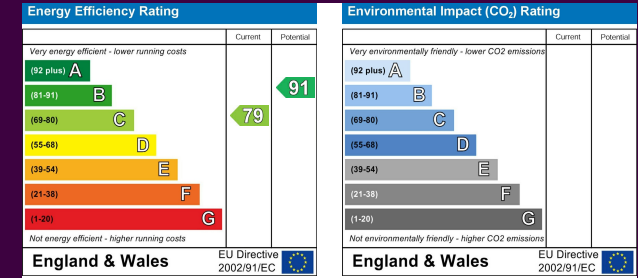
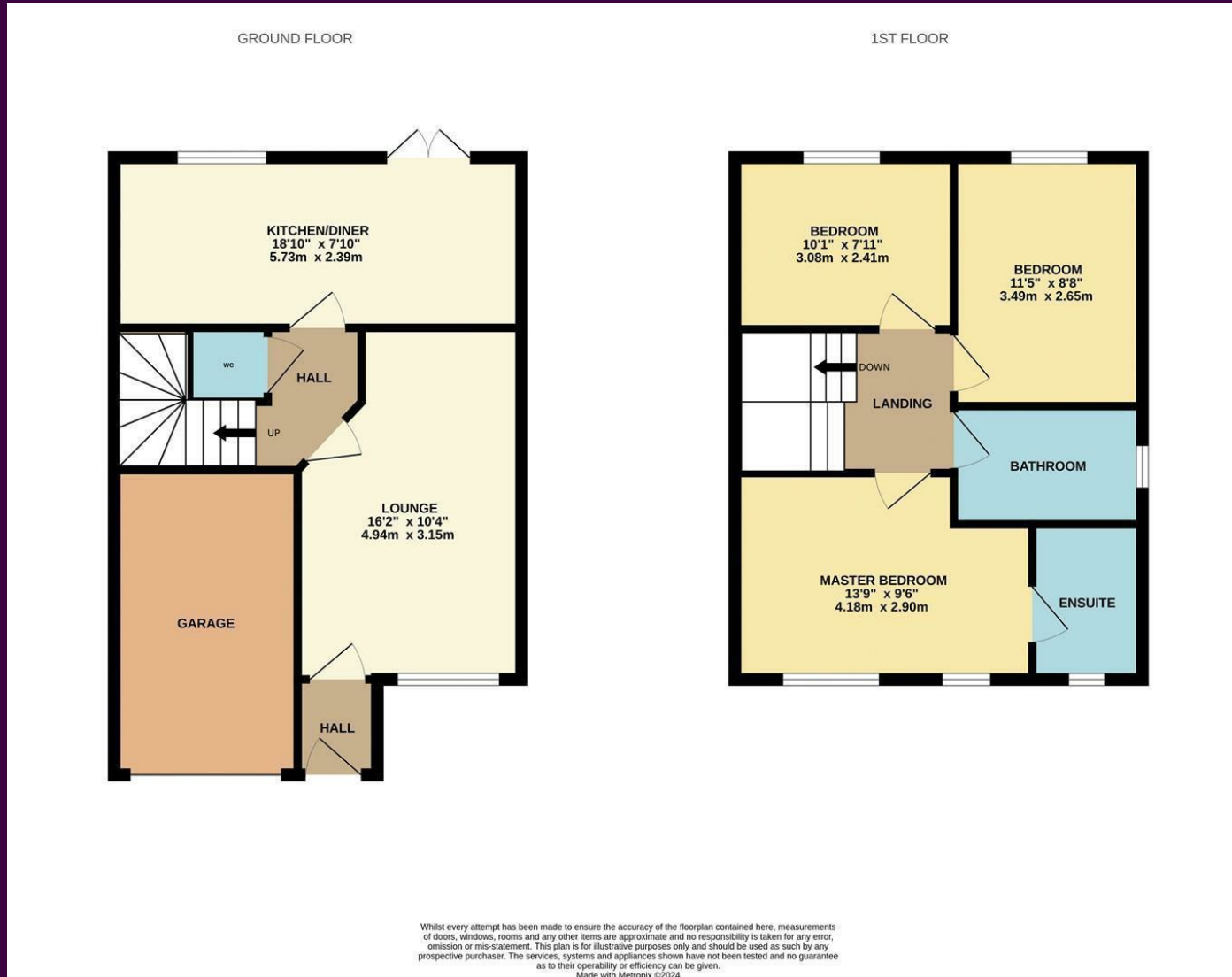
Built to the very popular 'Rufford' design, whilst enjoying a cul-de-sac position within the favoured 'Rings' development of Ingleby Barwick, ideally positioned for fabulous nearby amenities and 'highly regarded' schooling. Boasting a pleasant front outlook which is screened with greenery, a front drive, integral garage, additional parking space ahead, and enclosed westerly rear garden.



Very briefly, the well-presented accommodation comprises an entrance hall, living room, inner hall, cloakroom/WC and rear - open-plan kitchen/diner with 'French' doors to the garden on the ground floor. The first floor brings three spacious bedrooms, 'a particular feature of this style', the spacious 'Master' with ensuite, and separate family bathroom.

The well-tended rear garden, is laid mainly to lawn, with a large near-end patio. Early viewing advised.

The Layout



The Location



Council Tax Band:
Tenure:

C
Freehold



- Deceptively spacious three bedroom property
- Cul-de-sac position with green outlook, drive, garage and additional parking
- Favoured Rings location, terrific local amenities and schooling
- Westerly, enclosed rear garden
- Separate lounge and open-plan kitchen/diner
- Spacious 'Master' bedroom with ensuite



www.ingleby-homes.co.uk
01642 671025